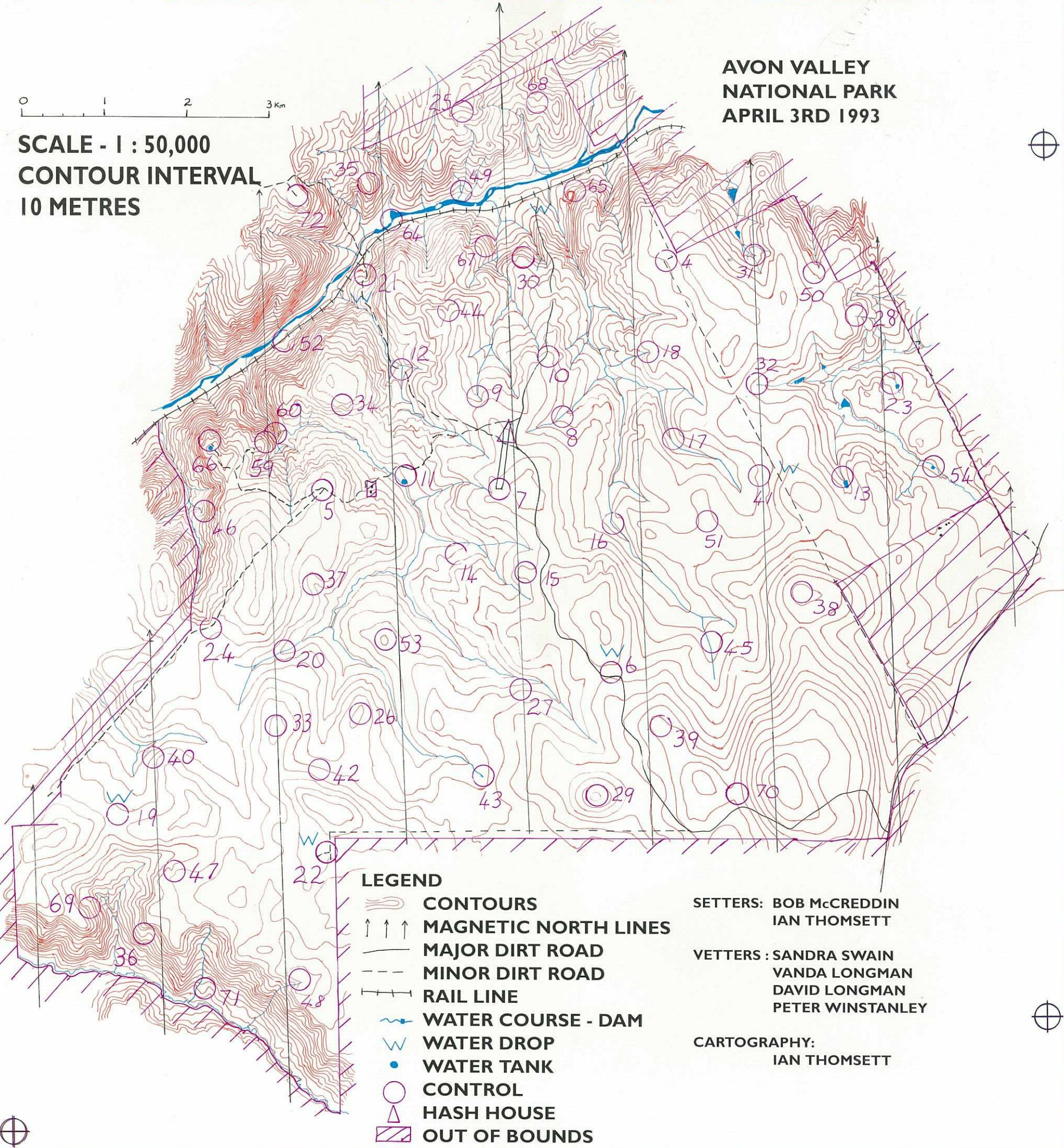


TOURIST TREK 12 HOUR ROGAINE

AVON VALLEY
NATIONAL PARK
APRIL 3RD 1993

0 1 2 3 km

SCALE - 1 : 50,000
CONTOUR INTERVAL
10 METRES



LEGEND

- CONTOURS
- MAGNETIC NORTH LINES
- MAJOR DIRT ROAD
- MINOR DIRT ROAD
- RAIL LINE
- WATER COURSE - DAM
- WATER DROP
- WATER TANK
- CONTROL
- HASH HOUSE
- OUT OF BOUNDS

SETTERS: BOB McCREDDIN
IAN THOMSETT

VETTERS: SANDRA SWAIN
VANDA LONGMAN
DAVID LONGMAN
PETER WINSTANLEY

CARTOGRAPHY:
IAN THOMSETT

THE TOURIST'S TREK ROGAINE

- | | | |
|----|--|----|
| 4. | The bend in the track. | 10 |
| 5. | 60 metres on a bearing of 260° from a benchmark at a track junction. | 10 |
| 6. | Eastern end of a rock surface. | 10 |

.....

THE NOVICE'S INCENTIVE

50 points bonus to any novice team visiting each of the six.

- | | | |
|-------|---|----|
| 7. | 10 metres South of the Southern tip of the airstrip. | 10 |
| 8. | A junction of a track and the creek. | 10 |
| 9. | A junction of watercourses. | 10 |
| 10. | 50 metres at 120° from a loading ramp. | 10 |
| 11. | 70 metres due North of the water tank. | 10 |
| 12. | Under a bridge. | 10 |
| | | |
| 13. | In the gully below the dam. | 20 |
| 14. | The North Western part of a clearing with a rock surface. | 20 |
| 15. | The summit. | 20 |
| 16. | The South side of a clearing on a bend in the creek. | 20 |
| 17. | The Northern end of a semi-clearing on the creek. | 20 |
| 18. | A junction of creeks. | 20 |
| | | |
| 19. | A track junction. | 30 |
| 20. | A log across the creek. | 30 |
| 21. | Head of a watercourse to the North of a campsite. | 30 |
| 22. | A barrier, 60 metres West of a track junction. | 30 |
| 23. | A rocky knoll. | 30 |
| 24. | Head of the gully. | 30 |
| | | |
| 25. | Head of a water course. | 40 |
| 26. | The summit. | 40 |
| 27. | On a spur. | 40 |
| 28. | Head of a water course. | 40 |
| 29. | The summit - well, in a relatively open area thereabouts. | 40 |
| 30. | Southern end of a bare rock surface. | 40 |
| | | |
| 31. | A creek junction. | 50 |
| 32. | Head of the watercourse. | 50 |
| 33. | The summit. | 50 |
| 34. | A boulder 10 metres to the West of the head of a watercourse. | 50 |
| 35. | The summit. | 50 |
| 36. | On the spur, at the Northern end of a more open area. | 50 |

- | | | |
|-------|---|----|
| 37. | The Northern end of a bare rock surface, 50 metres x 20 metres. | 50 |
| 38. | The summit - at the base of a large tree where the ground is rocky. | 50 |
| 39. | Top of the spur. | 50 |
| 40. | A broken fence line low on the broad spur. | 50 |
| 41. | The high point within the rock surface, 300 metres x 200 metres. | 50 |
| 42. | Northern end of a clearing, 150 metres x 100 metres. | 50 |
| | | |
| 43. | End of the watercourse. | 60 |
| 44. | Head of the gully. | 60 |
| 45. | Southern end of a rock surface. | 60 |
| 46. | Head of a watercourse. | 60 |
| 47. | A watercourse junction. | 60 |
| 48. | Head of the gully. | 60 |
| | | |
| 49. | A creek junction. | 70 |
| 50. | A fence corner at the head of a gully. | 70 |
| 51. | A junction of indistinct tracks on a broad saddle. | 70 |
| 52. | The junction of a watercourse and a track on the Southern side of the railway line. | 70 |
| 53. | The summit. | 70 |
| 54. | The dam. | 70 |

.....

THE DELIGHTFUL DUO - 50 points bonus if you visit each. But do be careful.

- | | | |
|-----|---|----|
| 59. | 10 metres South of a lookout point on a track down from the car park. | 80 |
| 60. | A tree in a rock within Drummond Falls. | 80 |

.....

THE TOURIST'S TRIO - 50 point bonus if you visit each.

- | | | |
|-------|--|-----|
| 64. | Emu Falls is the romantic name for a long stretch of white water and rock. Look for the Western end of a long pool within Emu Falls. | 90 |
| 65. | The quarry of Quarry Road. The North Eastern corner on the first level - with care. | 90 |
| 66. | Northern end of extensive rock surface at Bald Hill Lookout - enjoy the view. | 90 |
| | | |
| 67. | Northern end of a long cliff, 10 metres high. | 100 |
| 68. | The saddle. | 100 |
| 69. | On a spur above the Western end of rocky ground. | 100 |
| 70. | A track bend in the broad saddle. | 100 |
| 71. | A broad spur. | 100 |
| 72. | Joe's Cage. The remnants of a corral that Moondyne Joe used to hold his stolen horses. Found at the end of the track. | 100 |
-